



LOUISVILLE LADDER

PUMP JACK GUIDE



LOUISVILLE.
L A D D E R

BECAUSE WORK AIN'T PLAY.

LOUISVILLE'S GUIDE TO **PUMP JACKS**

At Louisville Ladder, safety is a top concern.

In this guide, you will find a brief outline to inspect, setup, and properly use your Pump Jack System. You should always read the safety manual, instruction labels, and safety labels before working with this product.

KNOW YOUR PUMP JACK PARTS



1 Aluminum Pump Jack
LPB01



2 Foldable Brace with Adjustment
LPB04-01



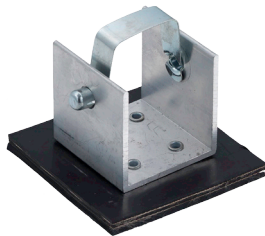
3 Foldable Brace
LPB04-02



4 Aluminum Pump Jack Pole
6ft - LPB05-06 18ft - LPB05-18
12ft - LPB05-12 24ft - LPB05-24



5 Aluminum Pole Connector
LPB06



6 Aluminum Pole Foot
LPB07



7 Aluminum Work Bench
LPB08



8 Safety Net
LPB09



9 Modular Guard Rail System*



10 Aluminum Plank
P Series



11 Nestable Stages
L-P2 Series

***See catalog for details**

INSPECTING AND SETTING UP YOUR PUMP JACK

INSPECT



1 Before you begin, verify you have all the pieces of your Pump Jack System. Determine the height you are working with and determine how many poles, connectors, braces, and stages you will need and their sizes.

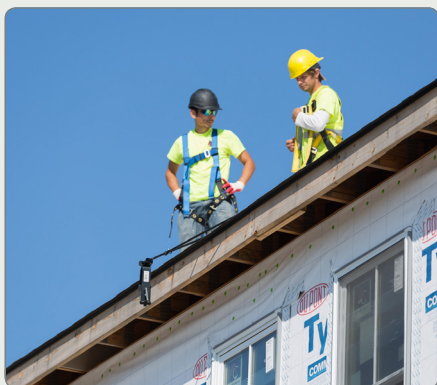


2 Clear the work site of any construction debris. Make sure there are no overhead electrical wires.



3 Inspect all pieces of the pump jack system. Make sure they are in good working order and have been cleaned and properly lubricated.

SETTING UP



1 Attach support brace to the roof of the building.



2 Connect the poles using the pole connector.



3 Slide the work bench on the pole.

INSPECTING AND SETTING UP YOUR **PUMP JACK**



4 **Next**, attach the Pump Jack to the pole.



5 **Align** the mounting holes in the work bench and pump jack and secure with the bolt and nut provided.



6 **Determine** the type of support surface the poles will be placed on. For soft ground either a pole anchor or a pole foot with a wood sill plate is required.



7 **Raise** the pole to the support brace.



8 **Secure** the pole to the support brace attached to the roof.



9 **Attach** the middle support brace to the side of the building. This only applies for poles over 24 feet in height. For systems over 24 feet the distance between pole support points shall not exceed 16 feet.

INSPECTING AND SETTING UP YOUR PUMP JACK



10 Place the platform stage on the pump jack. To secure the stage, run the chain through the rung and reattach to support arm using the provided quick link. Measure the distance between the wall and the platform and make sure it is no more than 14".



11 Install the guardrails at each end of the stage. Set the stage for the workbench on the supports and secure with chain.



12 Finally, to complete the set-up, install the safety net between the work bench and platform stage. Make sure it is properly secured.

WHEN USING NESTABLE STAGES



1 Align both stages together



2 Place aluminum pipe through the holes of the interlocking end caps. To secure, run the chain through the pipe and secure with quick link.

USING YOUR **PUMP JACK**

RAISING AND LOWERING YOUR SYSTEM



1 First, make sure the crank handle is in the closed and locked position.



2 Then to raise the stage, with a person at each pole, place your foot on the upper foot lever, and begin pumping. Each person should pump in unison to keep the stage level while raising.



3 If working alone, alternate between each pole raising the stage about one foot each time.



4 When the desired height is reached, return the foot lever to the up position.



5 To lower the stage, make sure the foot lever is in the full up position and the crank handle is in position to operate. While holding the pole, using your left foot, push the safety lever forward and maintain pressure while rotating the crank clockwise to lower the stage.



6 Once the desired height is reached, release foot pressure on the safety level and return the handle back to the closed and locked position.

THE DO'S AND DON'TS OF YOUR **PUMP JACK**

DO'S AND DON'TS

- Always use stages with at least a 500 lb. capacity rating with pumpjacks.
- Never have more than 2 people between any 2 poles of a pump jack scaffold.
- The total weight of 2 workers and materials should not exceed 500 lbs.
- Pump jack scaffolds can be used up to a maximum of 48ft in height.
- Inspect all components for damage or missing parts before using.
- Do not use wooden poles with Louisville pumpjack system.
- Never set up where contact with live electrical wires is possible.
- Make sure platform and workbench are secured with chains before raising.
- Never stand or sit on the workbench.
- Always use with proper fall protection as required by Federal, State, and Local codes.
- Make sure stage platform is level when working from a pumpjack scaffold.





LOUISVILLE®
L A D D E R

